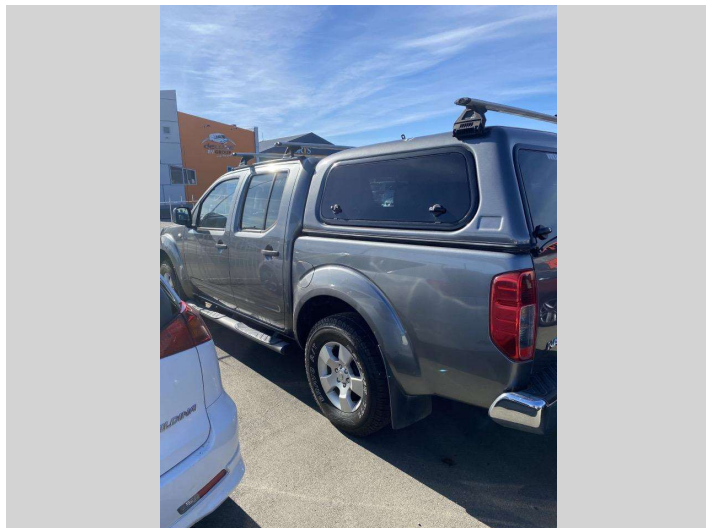


# 2013 Nissan NAVARA D/CAB STX 4X4



**Purchase Price** **\$22,995**  
Includes GST, Registration & Licensing

Finance may be available on this vehicle. Ask one of our friendly staff for more information.

Gain peace of mind with Mechanical Breakdown Insurance. **Ask us how.**

**Top features**

- » Air Conditioning
- » CANOPY
- » INCLUDES 2 YR WARRANTY

Body Style  
**4 door, DOUBLECAB**

Odometer  
**182,428 km**

Engine  
**2500 cc**

Fuel Type  
**TURBO DIESEL**

Transmission  
**Auto**

Wheels  
**Alloy Wheels**

VIN  
-

Interior  
**BLACK/GREY**

Safety



Based on 2023 UCSR rating for 05-15 models

Reg No.  
**GUE268**

Ext Colour  
**Grey**

History  
-

Seats  
**5 seats**

CO2 Emissions  
☆☆☆☆☆☆  
**317 grams/km**

Energy Economy  
★☆☆☆☆

**Annual fuel cost of \$4,400**  
**11.9L per 100km**

Cost per year is an estimate based on diesel price of \$2.00 per litre and an average distance of 14000 km. Includes Road User Charges (RUC). Emissions and Energy Economy figures standardised to 3P WLTP.

**Stock ID: 6751**



Richard Bateman Motors | Phone 03 578 5670 | Email bateman.motors@xtra.co.nz  
50 Main Street, BLENHEIM 7201, New Zealand  
www.richardbatemanmotors.co.nz