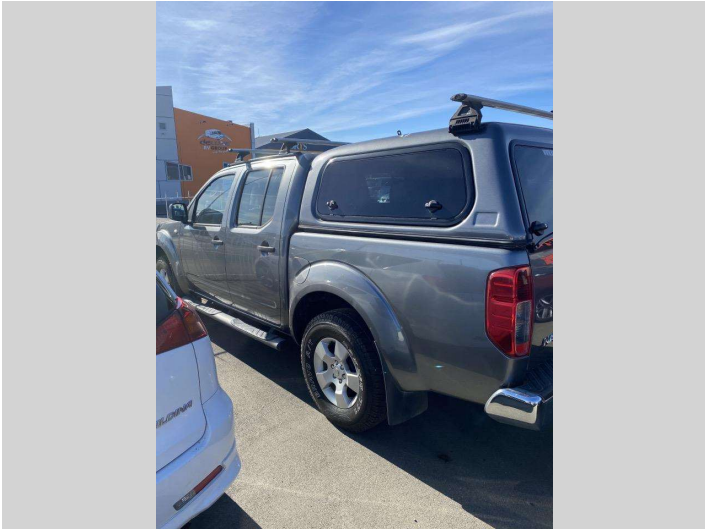


# 2013 Nissan NAVARA D/CAB STX 4X4



## Purchase Price

Includes GST, Registration & Licensing

**\$26,995**

Finance may be available on this vehicle. Ask one of our friendly staff for more information.

Gain peace of mind with Mechanical Breakdown Insurance. **Ask us how.**

## Top features

- » Air Conditioning
- » CANOPY
- » INCLUDES 2 YR WARRANTY

Body Style  
**4 door, DOUBLECAB**

Odometer  
**182,428 km**

Engine  
**2500 cc**

Fuel Type  
**TURBO DIESEL**

Transmission  
**Auto**

Wheels  
**Alloy Wheels**

VIN  
**-**

Interior  
**BLACK/GREY**

Safety



Based on 2023 UCSR rating for 05-15 models

Reg No.  
**GUE268**

Ext Colour  
**-**

History  
**-**

Seats  
**5 seats**

CO2 Emissions  
☆☆☆☆☆☆  
**317 grams/km**

Energy Economy  
☆☆☆☆☆☆

**Annual fuel cost of \$4,400**  
**11.9L per 100km**

Cost per year is an estimate based on diesel price of \$2.00 per litre and an average distance of 14000 km. Includes Road User Charges (RUC). Emissions and Energy Economy figures standardised to 3P WLTP.

**Stock ID: 6751**

**RICHARD BATEMAN** *Motors*

Richard Bateman Motors | Phone 03 578 5670 | Email  
bateman.motors@xtra.co.nz  
50 Main Street, BLENHEIM 7201, New Zealand  
www.richardbatemanmotors.co.nz